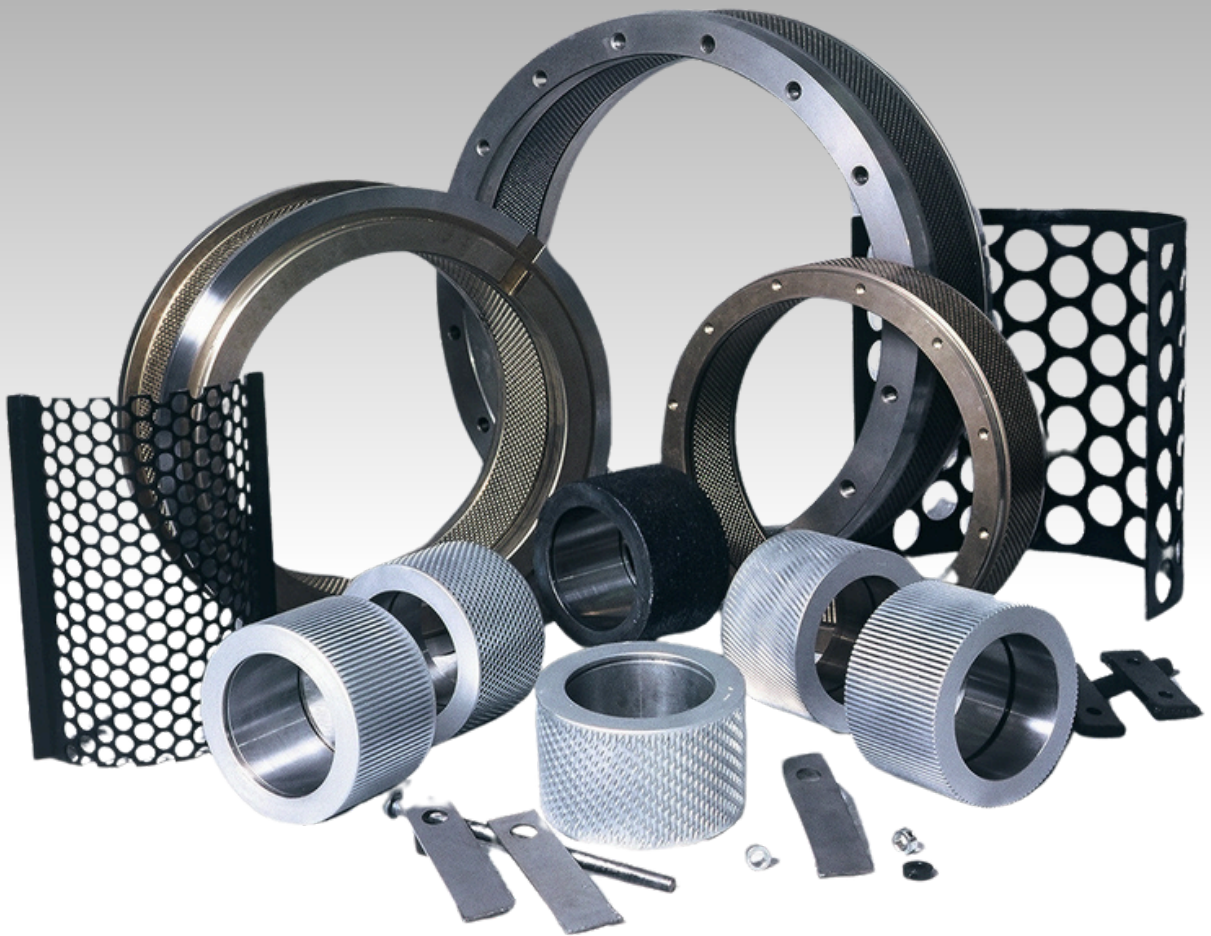




# CPM Replacement **Parts** & **Rework Service**

ONECPM.COM



Serves the  
pelleting, grinding,  
and milling industry

INFO@CPM.NET

# Performance **Guaranteed**



CPM is the **#1 leader in processing equipment.** We provide premium, reliable, and sustainable solutions for equipment needs in every industry.

**60,000+** globally installed machine base.

## **140+ years of supporting customer success**

At CPM, we believe that exceptional service goes beyond products — it's about partnerships. Founded in 1883, CPM has grown into a global leader in industrial equipment, serving industries that feed and fuel the world. Today, with over 1,700 employees and 36 locations worldwide, we're proud to support your business with the most comprehensive aftermarket and service solutions available.

When you partner with CPM, you gain more than equipment—you gain a team committed to your success. From spares and upgrades, field support to expert training, our goal is to ensure your operations are efficient, sustainable, and profitable.



# Hammermill Replacement Parts



## Hammer Rods

CPM rods are heat treated to a depth of .090" while the competitors are .030". Our rods are available for most makes and models, but can also be custom designed to fit your needs.

**Spacers and lock collars also available.**



## Hammers

For decades, CPM has been manufacturing quality, long-wearing hammermill hammers. Our hammers are formed from a special steel alloy. Hammers are machined, hard-faced, and heat-treated to match user requirements.

Only CPM hammers feature **TruBore™** rod holes for less rod wear and better life. Along with **STC™** (Suspended Tungsten Carbide) hard facing, you are sure to get extended life out of your hammers.

## Rod Maintenance

Hammer rods and spacers should be replaced every time you replace hammers in your hammermill. It's important to regularly inspect your wear parts, including rods, to ensure your hammermill is operating at peak efficiency.

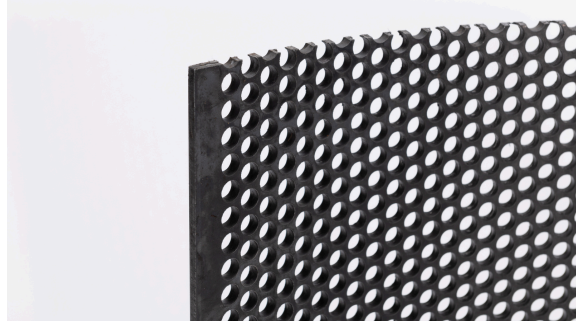
### Rod Styles Include:

- Notched
- Threaded
- Washer One End
- Drill & Tap



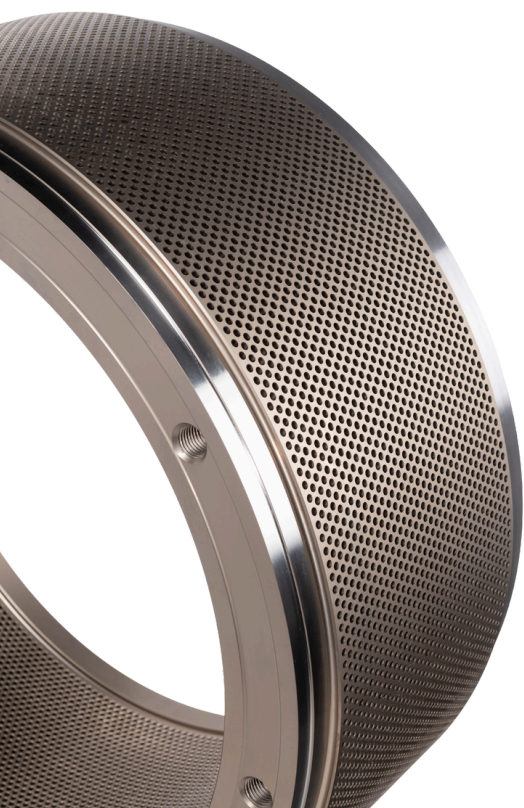
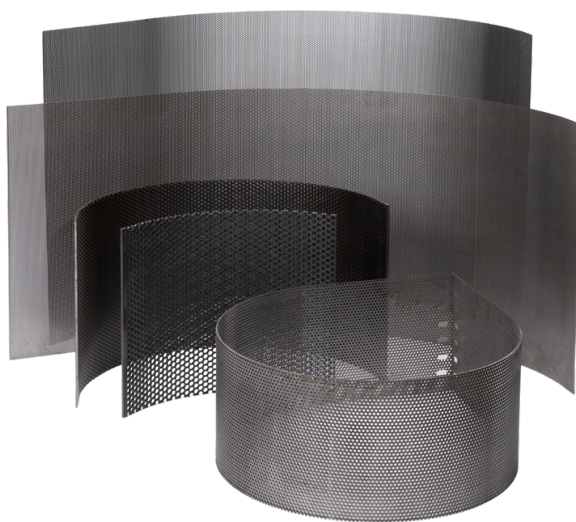
## Screens

CPM is the milling industry's leading source for hammermill screens. We have the capability to manufacture screens to match the size, perforation, and gauge used in your hammermill. Our large inventory of perforated material allows us to set the standard in lead times.



## Screen Maintenance

We recommend you inspect your hammermill screens regularly. Replacing your hammermill screens depends on the type of material you are processing, the wear life of your screens, and the frequency of use. Hammermill screen maintenance is especially important if you are running abrasive or hard materials.



## Pellet Mill Replacement Parts

### Dies

CPM dies are proven to increase efficiency and provide the most tons per hour. Our engineers are here to assist you in developing a die to fit your specific pelleting needs. Between our industry leading lead times and various inventory programs, CPM is sure to get you your die when you need it.





*Dies are offered in a variety of different styles and sizes.*

Because not all pelleting applications have the same die requirements, we offer a variety of steel forgings to satisfy the needs of our customers.

### **Also Available:**

- Die Clamps
- Wear Rings
- Shear Pins
- Compression Bolts
- Clamp Gauges
- Drive Keys

### **3 Unique Types of Steel Forgings:**

**Lightning — J4 Alloy — Hi-Chrome**

## **Pro-Roll**

Pro-Roll™ food grade grease provides essential, adequate lubrication and protection to ensure your pellet mill is running at optimal performance, reducing the need for maintenance and repairs.

Pro-Roll™ food machinery grease meets H1 guidelines for incidental food contact. If you are producing food and feed pellets, it is crucial that you use food-grade lubricants that are safe for consumption by animals or humans to avoid the risk of contamination and health hazards.



- Designed specifically for pellet mills
- Extreme high load carrying capability
- More forgiveness for accidental operator neglect

*Offered in tubes, kegs, and barrels to satisfy your needs.*

# Roller Shells



Roller shells have been developed exclusively by CPM to wear longer than any other type of roll shell in use today. They are made from high quality materials that are proven to withstand high temperatures and pressure without degrading or warping. Our roller shells are hardened, providing longer wear life with the same hardness through the entire roller shell.

Roller shells are available for most pellet mill models — customizable options and smooth surfaces allow for optimized performance and reduced friction, while easy maintenance helps reduce downtime.

## Assembly Parts

CPM carries internal components to aid in your roller assembly rebuilds — available for all brands!



# Die & Roll

## Rework Department

At CPM, we offer a reworking and retuning service for any die. All dies undergo cleaning, resurfacing of the pad, and rechamfering of the holes.

Every die that is received will also have an inspection report that includes recommendations for wear components like roll shells, wear rings, and clamps. If necessary, we will also help you in remodeling the hole pattern on your dies.

Before sending in your die for rework, we recommend you reach out to your representative to go over the eligibility of your die to be reworked.

### Die Pad

*Before*



*After*



### Dies

*Before*

*After*



Another service CPM offers is roll shell rebuilding. CPM will schedule a pickup for your used-up assemblies. Once they arrive to us, we break them down and evaluate what parts are good and which need replaced. Your sales representative will contact you along the way with any important information and part needs. Once your assemblies are rebuilt and filled with compatible grease, we will ship them back to you on our returnable **Roll Boss™** carrier.

*Before*

### Roller Shells

*After*







From the food you eat to the fuels you require, CPM plays an important role in building a better world. Our experienced team and family of trusted brands are working together to make our planet a better place to live.

**CONTACT@ONECPM.COM**  
**ONECPM.COM**

