



## **Aftermarket** & Service Solutions

ONECPM.COM



Animal Feed,  
Oilseed, and  
Alternative Fuels

INFO@CPM.NET

# Performance Guaranteed



## Our Services

- Service contracts
- Field service
- Maintenance & optimization
- Retrofits & rebuilds
- Automation for efficiency
- Training & education

## Parts & Components

- Genuine parts for maximum reliability
- Precision-engineered components
- Customized packaging services



CPM is the **#1 leader in processing equipment**. We provide premium, reliable, and sustainable solutions for equipment needs in every industry.

**60,000+** globally installed machine base.

## 140+ years of supporting customer success

At CPM, we believe that exceptional service goes beyond products—it's about partnerships. Founded in 1883, CPM has grown into a global leader in industrial equipment, serving industries that feed and fuel the world. Today, with over 1,700 employees and 36 locations worldwide, we're proud to support your business with the most comprehensive aftermarket and service solutions available.

When you partner with CPM, you gain more than equipment—you gain a team committed to your success. From spares and upgrades, field support to expert training, our goal is to ensure your operations are efficient, sustainable, and profitable.



# Our Services



## Service Contracts

Maximize performance,  
minimize surprises

Regular maintenance shouldn't be an afterthought. With CPM service contracts, you can:

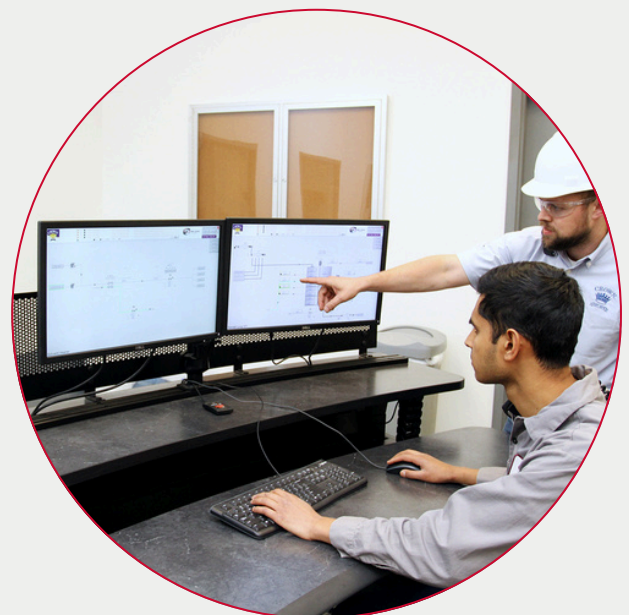
- **Prevent downtime:** Scheduled inspections catch potential issues before they cause delays
- **Simplify operations:** Leave the maintenance scheduling to us, so you can focus on what matters
- **Access priority support:** Our global network of technicians is ready to respond whenever needed

## Field Service

On-site expertise, anywhere  
you need it

An on-site visit from CPM's field service team can transform your operation, ensuring your equipment runs at peak performance while improving efficiency and productivity. Whether you've had your CPM equipment for six months or 30 years, our expert technicians are ready to support you.

- **Tailored solutions:** Maximize performance with on-site assessments and customized recommendations
- **Expert care:** Keep your equipment running at its best with comprehensive servicing for all CPM machinery
- **Rapid problem solving:** Minimize downtime with fast, precise troubleshooting and part replacements



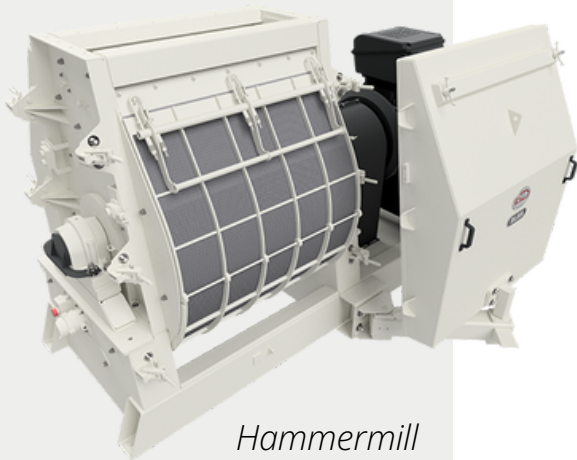


# Maintenance & Optimization

## Protect your investment with proactive care

Well-maintained equipment performs better, lasts longer, and costs less. Our professional maintenance services ensure your CPM machines operate at peak efficiency throughout their lifecycle.

- **Comprehensive services:** From routine maintenance to major upgrades
- **Value-added support:** Technical advice, system updates, and process optimization



*Hammermill*



*Roller Mill*

# Retrofits & Rebuilds

## Extend equipment life, enhance performance

Maximize your ROI with CPM's retrofit and rebuild services. Upgrade existing equipment (hammermills, pellet mills, cracking mills, etc.) or restore it to peak condition with our cost-effective solutions that improve sustainability and efficiency.



*Pellet Mill*



# Automation for Efficiency

## Revolutionizing processes with smarter solutions

Automation is the future of industrial processing, and CPM leads the way with advanced solutions tailored to your industry.

- **Real-time insights:** Monitor performance and diagnose issues with precision
- **Predictive maintenance:** Prevent problems before they occur with advanced analytics
- **Seamless integration:** Designed to work with your existing systems, enhancing productivity effortlessly



## Training & Education

### Empowering your team for long-term success

The more your team knows, the better your operations run. At CPM, we offer training programs tailored to your needs.

- **Customized curricula:** From basic operations to advanced troubleshooting
- **Hands-on learning:** Practical training ensures your team can apply their knowledge immediately
- **Global access:** Choose on-site training or visit one of our global facilities for expert-led programs

# Parts & Components



CPM spare parts ensure you get reliable performance, reduced costs, and the confidence that comes from decades of proven expertise.

## Genuine Parts for Maximum Reliability

Every part of your equipment matters. CPM's original spare parts deliver unmatched performance, minimize downtime, and ensure long-term reliability.

- **Global availability:** CPM maintains an extensive inventory of spare parts, from the smallest nut to the largest gear, ensuring quick access for machines of any age—even those purchased decades ago
- **Industry-leading technology:** CPM's parts are engineered with advanced processing technology and customized materials to precisely match your formulations and maximize productivity
- **24/7 logistics distribution:** Our cooperative logistics network delivers parts whenever and wherever you need them, keeping your operations on track
- **Unmatched global research:** As a global partner, CPM meets the service needs of customers worldwide, providing immediate access to essential spare parts and components

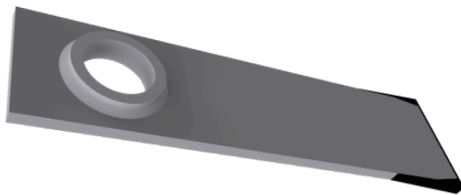


# Precision-engineered **Components**



## **Dies and Roller Shells**

Crafted to resist abrasion, corrosion, and breakage, CPM dies and roller shells are engineered for optimal performance across diverse applications. From feed to plastics, we offer a wide range of materials and customizations to match your needs precisely.

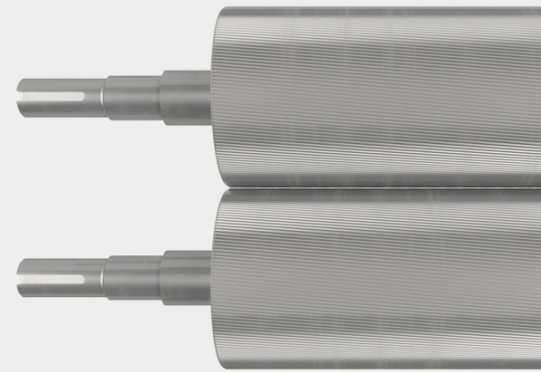


## **Hammers**

CPM hammers, finished with advanced hard-facing technology, provide the toughness required for even the most demanding applications, ensuring consistent performance.

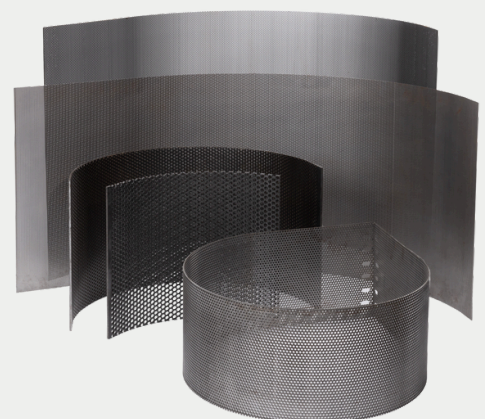
## **Rolls**

Our roller mill and flaking mill rolls are manufactured with precision, ensuring maximum durability and a perfect fit for your equipment. From resurfacing to quick replacements, CPM rolls help maintain efficiency in every process.



## **Hammermill Screens**

Manufactured from high-quality carbon steel, our hammermill screens ensure efficient grinding and long-lasting durability. With quick turnaround times, we keep your operations running smoothly.



# Customized Packaging Services

## Tailored deliveries for seamless operations

Streamline your supply chain with our customized packaging services. We ensure the parts you need, arrive ready to integrate, saving you time and effort.

- **Custom kits:** Grouped parts for quick, on-site replacements
- **Optimized packaging:** Designed for safe, efficient transport
- **Simplified management:** Clear labeling and instructions to enhance your inventory process



## Ready to reduce downtime and maximize efficiency?

With CPM's global network of support, your operations are always in good hands. Reach out now to discover how we can make a difference.

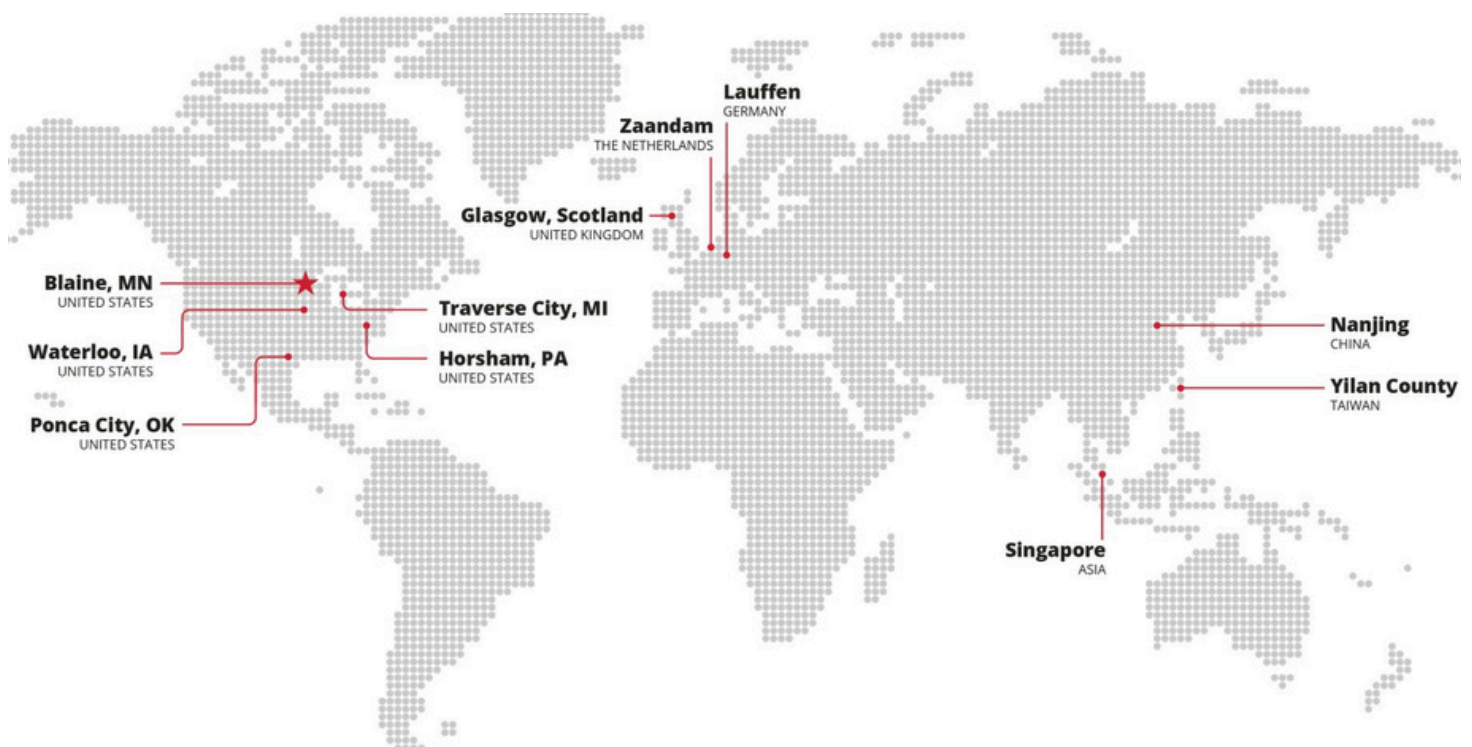




# Innovation Centers & Test Labs

Innovation that drives your business forward

At CPM, innovation isn't just a buzzword—it's the backbone of our commitment to helping you achieve better results. We help you solve real-world challenges with cutting-edge testing and process refinement, so you stay ahead of the competition.





## Talk with our experts:

**CPM United States:**

[cpmparts@cpm.net](mailto:cpmparts@cpm.net)

+1-319-232-8444

**CPM EMEA:**

[aftermarket.emea@cpm.net](mailto:aftermarket.emea@cpm.net)

+31-75-6512-660

**CPM Singapore:**

[cus.svcsg@cpm.net](mailto:cus.svcsg@cpm.net)

+65-6265-0701

**CPM China:**

[aftermarket.china@cpm.net](mailto:aftermarket.china@cpm.net)

+86-0510-85280487 / 85282240

**CPM Brazil:**

[sales.latam@cpm.net](mailto:sales.latam@cpm.net)

+55-0800-591-5214



From the food you eat to the fuels you require, CPM plays an important role in building a better world. Our experienced team and family of trusted brands are working together to make our planet a better place to live.

[CONTACT@ONECPM.COM](mailto:CONTACT@ONECPM.COM)  
[ONECPM.COM](http://ONECPM.COM)