



Stay Connected to Your Processing Operation With **Remote Monitoring.**

Remote monitoring continuously records and displays data from various aspects of the process and/or equipment to help achieve greater efficiency, quality, and overall performance. Data is collected from sensors, instruments, and other sources, and is visualized and used to make informed decisions and take appropriate actions.



MACHINE CAPACITY



ENERGY USAGE



OIL TEMPERATURE



MOISTURE CONTENT



RUNNING HOURS



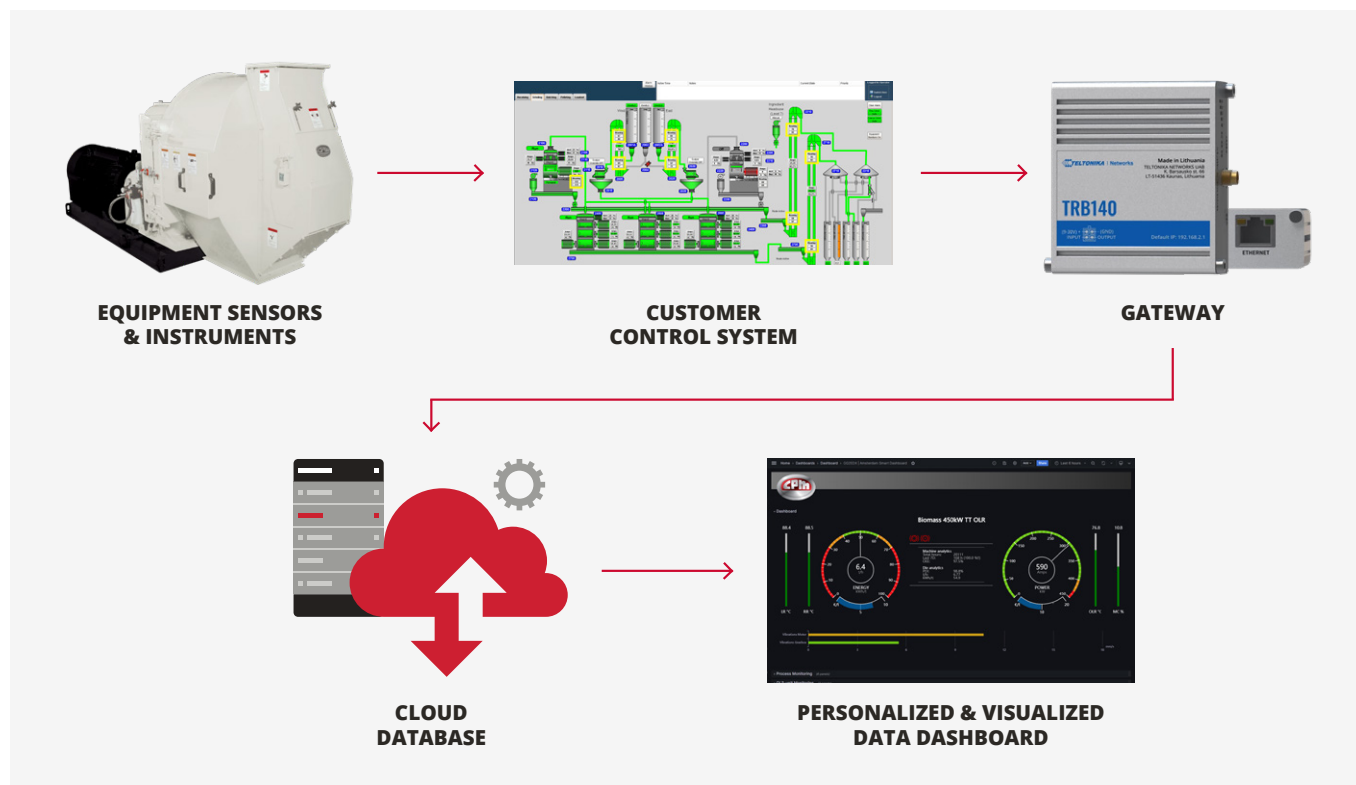
PRODUCT QUALITY



**MOTOR POWER
& LOAD**

...AND MORE

Stay Connected to Your Processing Operation With **Remote Monitoring.**



Access intelligence from your processing operation with CPM Remote Monitoring. Our solution enables you to monitor your CPM equipment and access key data insights, enabling you to make informed decisions faster.

PREDICTIVE & PREVENTIVE MAINTENANCE:

Detect operational problems before they cause production issues.

REDUCE ENERGY COSTS: Monitor energy usage and identify opportunities for energy savings, thus reducing costs and enabling achievements of sustainability goals.

EFFICIENT SUPPORT: Access remote process support from CPM experts to achieve quick answers and resolution in real time.

IMPROVED CAPACITY: Optimize your production line to improve capacity and quality of end products.

VISUALIZED DATA: View your personalized data in a user-friendly dashboard, anywhere and anytime.

MAXIMUM SECURITY: Have peace of mind that a secure encrypted connection and one-way communication ensures your data is protected.

INCREASED UPTIME: Use data insights to keep your processing operation running at its maximum potential.

ENHANCED SERVICES: Request additional levels of service and support from your partners at CPM.



From the food you eat to the fuels you require, CPM plays an important role in building a better world. Our experienced team and family of trusted brands are working together to make our planet a better place to live.

CONTACT@ONECPM.COM
ONECPM.COM